

summum LOOKBOOK

Fall collection 2021





cover: coat 1s1031-11463C6, **cardigan** 7s5612-7839C6, **blouse** 2s2629-11472C6, **trousers** 4s2205-11478C7, **scarf** 8s759-7839C6, **sneakers** 8s755-8389AC, **belt** 8s770-8398AC

inside cover: **cardigan** 7s5591-7836C8, **blouse** 2s2659-11523C8, **trousers** 4s2174-11467C8, **bag** 8s762-8393AC

Fall Collection — 2021 —

The new season elegantly embraces casual wear. Let's make it comfortable but keep it chic. Lush fabrics form a strong foundation for clothes that can be moulded to any mood or occasion. Flowy satin, smooth velvet and cosy alpaca yarns are smoothly mixed with vintage denim, the softest lamb leather and comfy Tencel. As with every new season, we strive to make our designs more sustainable, developed under the Aware label.

Summum classics such as the trouser suit, executed in both familiar and new colours, are accompanied by loungewear including soft hoodies and matching wide trousers, as well as new shapes like culottes and sleeveless cardigans. Light colours, ivory and shell are seen throughout the season. They receive a winter glow with shades of brown, grey, black and navy with mauve, greens such as teal and seafoam, and a lemon curry for extra sparkle. It's not about contrasts, but about feeling confident in a cool, sophisticated way. Whether that's in denim, faux leather or the real deal is up to the Summum woman, who wears her outfits with joy and pride.

The buying period takes place from the 25th of January up to and including the 12th of March.

capsule 6 - will be delivered in July
capsule 7 - will be delivered in August
capsule 8 - will be delivered in September



cardigan 7s5602-7841C6, *top* 2s2652-11496C6, *skirt* 6s1206-11470C6, *belt* 8s770-8398AC, *scarf* 8s759-7839C6



jacket 1s1042-11485C7, *sweater* 3s4583-30263C7
trousers 4s2193-11485C7, *beanie* 8s772-7844AC



turtleneck 7s5588-7832C8, *skirt* 6s1204-11467C8



turtleneck 7s5588-7832C8, *skirt* 6s1204-11467C8, *scarf* 8s764-8396AC



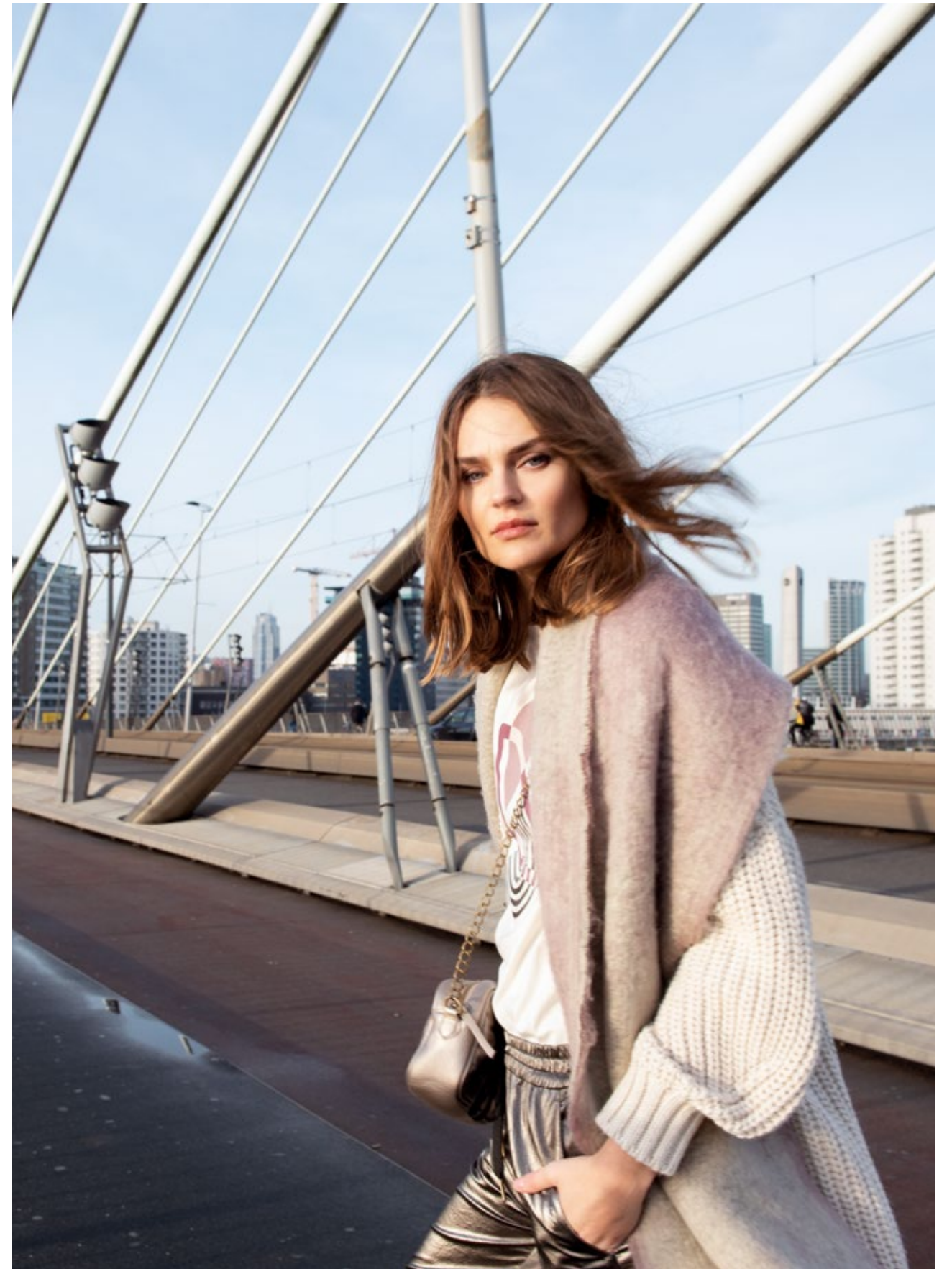
jacket 1s1032-11464C8
pullover 7s5616-7843C8
skirt 6s1211-11524C8



jacket 1s1032-11464C8, *pullover* 7s5616-7843C8, *skirt* 6s1211-11524C8



cardigan 7s5608-7837C8, *t-shirt* 3s4577-30285C6, *trousers* 4s2200-11499C6, *scarf* 8s763-8395AC, *bag* 8s760-8393AC



cardigan 7s5608-7837C8, *t-shirt* 3s4577-30285C6, *trousers* 4s2200-11499C6, *scarf* 8s763-8395AC, *bag* 8s760-8393AC



blazer 1s1039-11513C7, *trousers* 4s2203-11513C7, *belt* 8s771-8399AC, *sneakers* 8s755-8389AC



pullover 7s5594-7838C7, *trousers* 4s2203-11513C7, *sneakers* 8s755-8389AC



spencer 7s5614-7842C8, *dress* 5s1308-11527C8, *chelsea boots* 8s756-8390AC



spencer 7s5614-7842C8
dress 5s1308-11527C8
beanie 8s772-7844AC



jacket 1s1028-11461C6, *top* 2s2631-11468C8, *trousers* 4s2175-11468C8



jacket 1s1028-11461C6, *top* 2s2631-11468C8, *trousers* 4s2175-11468C8, *chelsea boots* 8s756-8390AC



gilet 9s087-11498C6
cardigan 7s5613-7838C6
blouse 2s2628-11476C6
culotte 4s2170-11498C6



leather jacket 1s1030-11467C8, *pullover* 7s5587-7832C8, *trousers* 4s2178-11512C8, *sneakers* 8s755-8389AC



leather jacket 1s1030-11467C8, *pullover* 7s5587-7832C8, *trousers* 4s2178-11512C8



dress 5s1295-11471C7
bag 8s761-8393AC



spencer 7s5593-7842C6, *blouse* 2s130-90220C6, *skirt* 6s1209-11496C6



pullover 7s5590-7836C8, skirt 6s1209-11496C6

CAPSULE 6

Say yes to less

*Simplicity in wearing, translated into styles and fabrics,
in comfortable pastel shades and preppy prints.*



pullover 7s5507-7830C6, skirt 6s1208-11479C6, chelsea boots 8s756-8390AC, scarf 8s765-8397AC



jacket 1s1028-11461C6, *blouse* 2s2633-11508C7, *trousers* 4s2202-11498C6, *chelsea boots* 8s756-8390AC
beanie 8s772-7844AC

pullover 7s5596-7833C6
jeans 4s2171-5098BD
dress 5s1310-11498C6



gilet 9s087-11498C6
blouse 2s2632-11508C6
culotte 4s2170-11498C6

jacket 1s1028-11461C6
blouse 2s2633-11508C7
trousers 4s2202-11498C6
beanie 8s772-7844AC

blouse 2s2644-11508C6
trousers 4s2200-11499C6



top 3s4591-30270C6
trousers 4s2200-11499C6

blouse 2s2656-11504C6
skirt 6s1210-11499C6



cardigan 7s5602-7841C6
blouse 2s2644-11508C6
trousers 4s2200-11499C6
chelsea boots 8s756-8390AC





cardigan 7s5611-7833C6, **skirt** 6s1208-11479C6, **chelsea boots** 8s756-8390AC

pullover
7s5595-7833C6
skirt
6s1209-11496C6
top
2s2621-11472C6
culotte
4s2170-11498C6



cardigan 7s5613-7838C6
culotte 4s2170-11498C6
boots 8s757-8391AC

pullover 7s5595-7833C6
skirt 6s1209-11496C6

top 2s2627-11479C6
trousers 4s2164-11489C6



top 3s4560-30266C6
trousers 4s2168-11495C6

pullover 7s5595-7833C6
trousers 4s2174-11467C6



cardigan 7s5611-7833C6, **top** 2s2661-11505C6, **trousers** 4s2204-11495C6



classic blazer 1s100-90100C6, *t-shirt* 3s4577-30285C6, *classic trousers* 4s100-90100C6



t-shirt 3s4577-30285C6



top 7s5598-7830C6
trousers 4s2196-11496C6
sneakers 8s755-8389AC

blouse 2s2635-11500C6





dress
5s1299-11501C6
chelsea boots
8s756-8390AC

top
2s2616-11509C6
trousers
4s2157-11483C6



top 2s2616-11509C6
trousers 4s2157-11483C6

cardigan 7s5603-7841C6
top 3s4570-30271C6
trousers 4s2202-11498C6



dress 5s1312-11504C6

AWARE LABEL



The below fabrics are part of this seasons AWARE label:

JERSEY:

90310 / 30271 / 30273 / 30259:
95% EcoVero viscose, 5% elastane

The viscose in this fabric is EcoVero™ viscose from Lenzing, a yarn made from wood pulp sourced from sustainable, FSC or PEFC-certified forests. The closed loop production process used to make this yarn recycles both water and solvents. Please visit www.ecovero.com for more information.

30285: 50% cotton, 50% EcoVero modal

This fabric is a blend of cotton and modal. Just like viscose, modal is made from cellulose fibres from beech trees. EcoVero modal by Lenzing has a positive CO2 footprint. Lenzing's closed loop production process keeps both emissions and water consumption to a minimum. In comparison with cotton, the production process for Lenzing's modal requires considerably less land and 10 to 20 times less water.

30281: 100% organic cotton

This fabric is made from organic cotton. The cotton was grown under strictly controlled conditions, without genetic modification and without the use of toxic pesticides or other harmful chemicals.

30278: 76% organic cotton, 12% polyester, 12% polyamide

This fabric is made using organic cotton. The cotton was grown under strictly controlled conditions, without genetic modification and without the use of toxic pesticides or other harmful chemicals.

30258: 95% organic cotton, 5% elastane

This fabric is made from organic cotton. The cotton was grown under strictly controlled conditions, without genetic modification and without the use of toxic pesticides or other harmful chemicals.

ACCESSORIES:

8394-8398-8399: 100% cow leather

All of Summum's belts are made in the Netherlands using leather that complies with the European REACH regulation for the use of chemicals. The leather used is residual waste from the European food industry and is processed and coloured by a Dutch tannery.

The buckles and other metal parts are nickel free.

BLUE DAZE:

5081: 98% organic cotton, 2% elastane

This denim fabric is made up of 98% recycled cotton. The cotton was grown under strictly controlled conditions, without genetic modification and without the use of toxic pesticides or other harmful chemicals. For the wash, only recycled water was used.

5098: 98% organic cotton, 2% elastane

This denim fabric is made up of 98% recycled cotton. The cotton was grown under strictly controlled conditions, without genetic modification and without the use of toxic pesticides or other harmful chemicals. For the wash, only recycled water was used.

KNIT:

7832: 35% viscose, 35% polyamide, 30% wool

This blended fabric is made from 30% mulesing-free merino wool - to produce this wool, the merino sheep are reared and farmed in an animal-friendly way to ensure sustainable wool production. In addition, this blend consists of 35% FSC-certified viscose.

7834: 71% alpaca, 29% recycled polyester

This knit is made from an Italian yarn consisting of expensive, undyed alpaca wool and polyester extracted from post-consumer recycled PET bottles. Omitting the usual bleaching and dyeing process and adding only recycled polyester to the yarn limits the environmental impact of this material.

CMT:

11505: 100% viscose

Approximately 51% of the viscose in this fabric is EcoVero™ viscose from Lenzing, a yarn made from wood pulp sourced from sustainable, FSC or PEFC-certified forests. The closed loop production process used to make this yarn recycles both water and solvents. Please visit www.ecovero.com for more information.

11507: 100% viscose

This viscose is a 100% FSC Mix product, which means that the yarn is made from a mix of wood pulp from FSC-certified forest, FSC-controlled wood and post-consumer recycled wood. The raw material in this material is therefore 100% organic, sustainably produced and partly circular.

11508: 100% viscose

The warp thread in this fabric is made from ENKA® viscose, a filament yarn made from wood comprising 40-50% cellulose - the most common organic and recyclable plant material. ENKA® uses only cellulose from wood with the FSC label sourced from local, legal and sustainably managed forests in Sweden, Finland, Estonia and Scotland. ENKA® works with a self-developed policy that promotes sustainable forest management and protects old-growth forests. Please visit www.enka.de for more information.

11515: 100% viscose

Approximately 51% of the viscose in this fabric is EcoVero™ viscose from Lenzing, a yarn made from wood pulp sourced from sustainable, FSC or PEFC-certified forests. The closed loop production process used to make this yarn recycles both water and solvents. Please visit www.ecovero.com for more information.

11517: 70% polyester, 30% recycled polyester

30% of the polyester yarns in this material are made from recycled polyester. Recycled polyester is made from post-consumer recycled plastic such as PET bottles, making it a greener and more sustainable alternative to virgin polyester yarns. As well as shrinking the world's plastic waste mountain, the production process requires less water, less use of chemicals and less energy.



cardigan 7s5613-7838C6
trousers 4s2170-11498C6



pullover 7s5596-7833C6
trousers 4s2196-11496C6
sneakers 8s755-8389AC

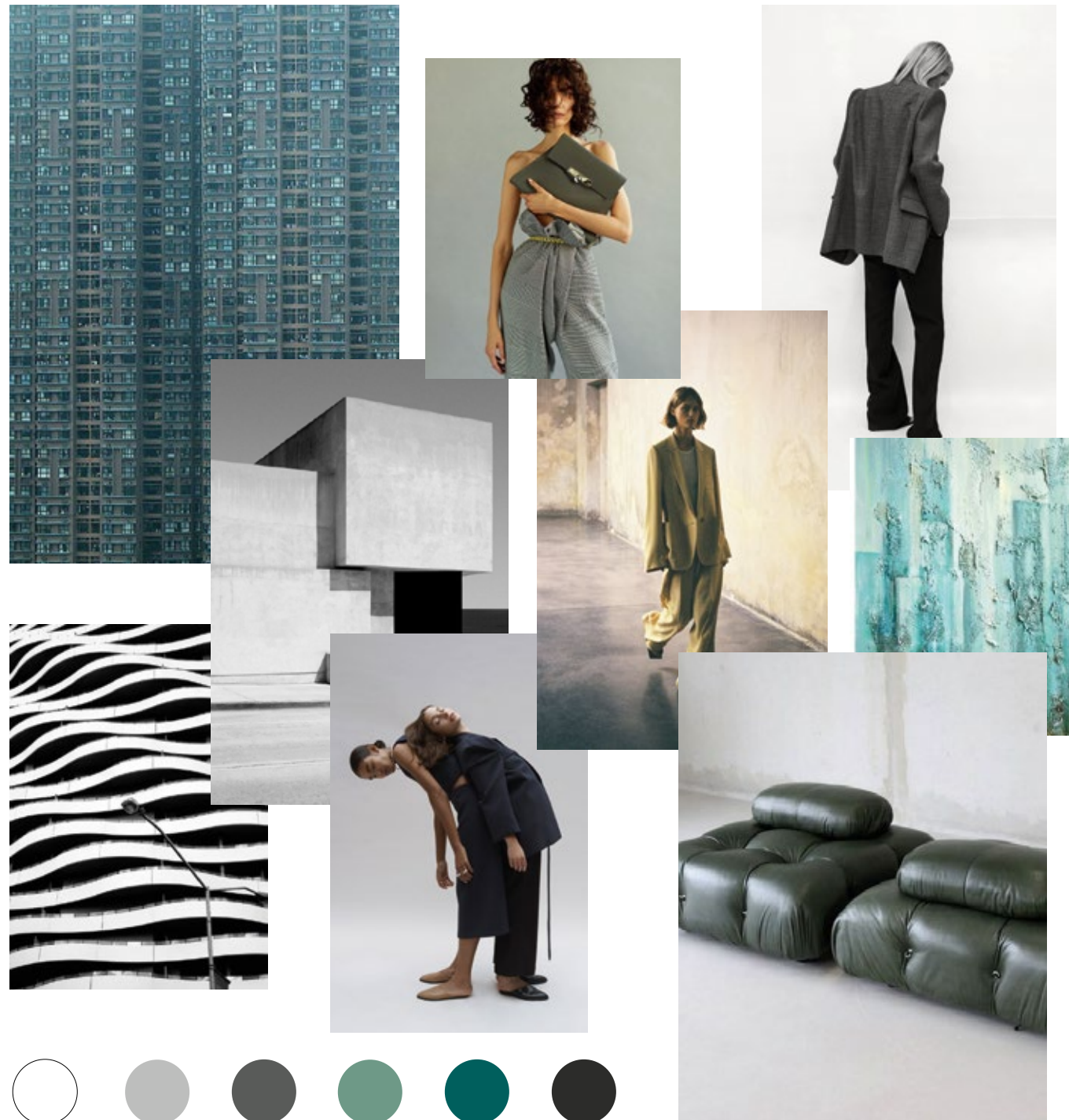


sweater 3s4556-30278C6
trousers 4s2202-11498C6

CAPSULE 7

Classic comfort

Let's dress up in a modern mood, where nostalgic colours and sturdy fabrics meet each other like rock & rebel.



blazer 1s1039-11513C7, *trousers* 4s2203-11513C7, *belt* 8s770-8398AC, *chelsea boots* 8s756-8390AC

blouse 2s2617-11509C7
jeans 4s2187-5102BD



dress 5s1295-11471C7
blouse 2s2617-11509C7
jeans 4s2187-5102BD
boots 8s757-8391AC



dress 5s1295-11471C7
chelsea boots 8s756-8390AC





blouse 2s2641-11518C7, *skirt* 6s1204-11467C7



blouse 2s2655-11515C7



dress 5s1305-11518C7
boots 8s757-8391AC

blouse 2s2655-11515C7
trousers 4s2197-11498C7
chelsea boots 8s756-8390AC





pullover
7s5605-7835C7
trousers
4s2157-11483C7

coat
1s1031-11463C6
blouse
2s2620-11518C7



denim blouse 2s2637-5101BD
trousers 4s2203-11513C7



pullover 7s5605-7835C7
skirt 6s1204-11467C7

coat 1s1031-11463C6
blouse 2s2620-11518C7
jeans 4s2187-5102BD
scarf 8s763-8395AC





top 2s2652-11496C7, **trousers** 4s2196-11496C6, **sneakers** 8s755-8389AC



cardigan 7s5606-7843C7



jacket 1s1038-30263C7
trousers 4s2166-11486C7

sweater 3s4583-30263C7
trousers 4s2196-11496C6
sneakers 8s755-8389AC



dress 5s1309-11509C7



blouse 2s2647-11514C7
jeans 4s2190-5100BD

gilet 9s087-11498C7
turtleneck 7s5529-7830C7
trousers 4s2203-11513C7

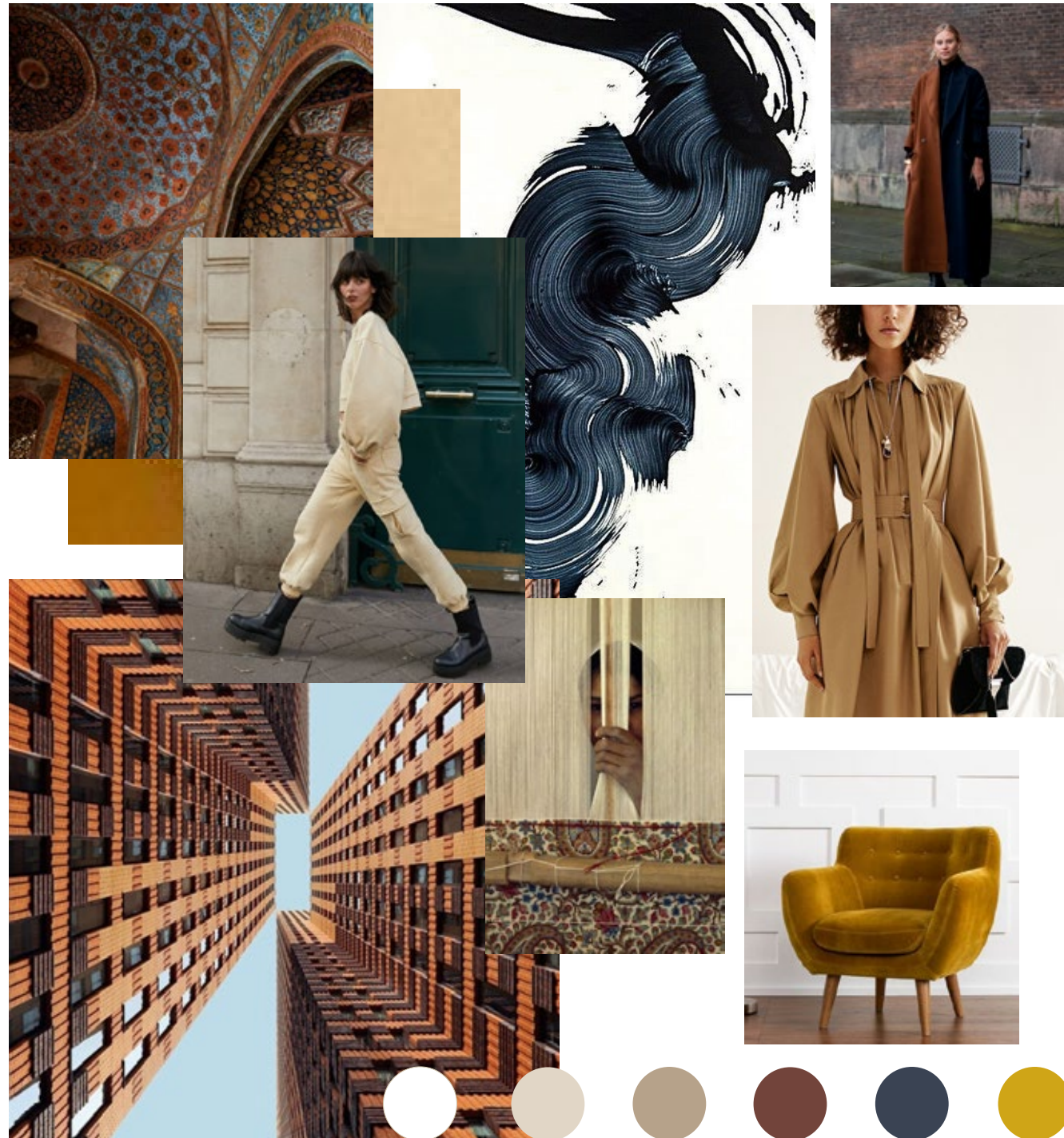


dress 5s1315-11514C7

CAPSULE 8

Earth elements

Celebrate life with the comeback of basic elements. No more rules but freedom and individuality. Everything can and is allowed.



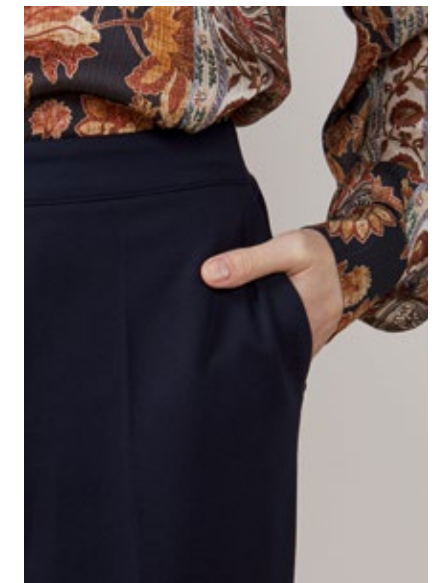
blouse 2s2619-11527C8, trousers 4s2191-30267C8



gilet 9s087-11498C8, *blouse* 2s2619-11527C8, *culotte* 4s2170-11498C8

dress
5s1310-11498C8

blouse
2s2653-11527C8
culotte
4s2170-11498C8



dress 5s1308-11527C8

blouse 2s2653-11527C8
culotte 4s2170-11498C8

blouse 2s2612-11466C8
trousers 4s2175-11468C8



pullover 7s5590-7836C8
pullover 7s5589-7834C8
skirt 6s1209-11496C8
sneakers 8s755-8389AC



top 2s2631-11468C8
trousers 4s2175-11468C8
chelsea boots 8s756-8390AC





pullover 7s5616-7843C8, *skirt* 6s1211-11524C8



dress 5s1313-11524C8



spencer 7s5614-7842C8
dress 5s1313-11524C8

pullover 7s5616-7843C8
skirt 6s1206-11470C8





cardigan
7s5608-7837C8
blouse
2s2619-11527C8
trousers
4s2191-30267C8

blouse
2s2653-11527C8
trousers
4s2178-11512C8



pullover 7s5588-7832C8
trousers 4s2178-11512C8

pullover 7s5589-7834C8
jeans 4s2158-11483BD



blouse 2s2653-11527C8, **trousers** 4s2178-11512C8



blouse 2s2649-11528C8
culotte 4s2170-11498C8



dress 5s1311-11528C8



cardigan 7s5591-7836C8
trousers 4s2196-11496C8
sneakers 8s755-8389AC

sweater 3s4583-30263C8
trousers 4s2191-30267C8
bag 8s762-8393AC





blouse 2s2659-11523C8, *trousers* 4s2178-11512C8, *sneakers* 8s755-8389AC



blouse
2s2659-11523C8
trousers
4s2159-11322C8
jacket
1s1034-11322C8
trousers
4s2159-11322C8



classic blazer 1s100-90100C8
classic trousers 4s100-90100C8
sneakers 8s755-8389AC
blouse 2s2660-11523C8
trousers 4s2175-11468C8

Hey, wait...

THERE IS MORE Online

*Have we caught your interest with our new Fall 2021 lookbook?
Then we've got good news for you! You can discover more
collection online on our B2B website.*

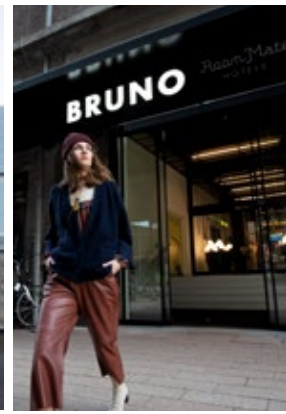
We look forward to welcoming you at one of our showrooms. If you would prefer not to come in person, we would love to show you our gorgeous new collection online. You can take a look in our online showroom and pre-order the Fall 2021 collection - all with the help of your agent or a member of our sales team. You can find the showroom in the standard B2B customer portal. The magic key is your customer-specific login. <https://b2b.summumwoman.com>



gilet 9s086-11512C8, **blouse** 2s2612-11466C8, **trousers** 4s2178-11512C8, **sneakers** 8s755-8389AC



coat 1s1031-11463C6
cardigan 7s5612-7839C6
trousers 4s2205-11478C7
scarf 8s759-7839C6 & more



cardigan 7s5591-7836C8
blouse 2s2659-11523C8
trousers 4s2174-11467C8



cardigan 7s5602-7841C6
skirt 6s1206-11470C6
belt 8s770-8398AC
scarf 8s759-7839C6



jacket 1s1042-11485C7
sweater 3s4583-30263C7
trousers 4s2193-11485C7
beanie 8s772-7844AC



turtleneck 7s5588-7832C8
skirt 6s1204-11467C8



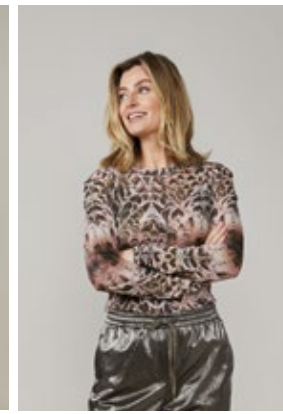
pullover 7s5596-7833C6
jeans 4s2171-5098BD



dress 5s1310-11498C6



gilet 9s087-11498C6
blouse 2s2632-11508C6
culotte 4s2170-11498C6



top 3s4591-30270C6
trousers 4s2200-11499C6



blouse 2s2656-11504C6
skirt 6s1210-11499C6



turtleneck 7s5588-7832C8
skirt 6s1204-11467C8
scarf 8s764-8396AC



jacket 1s1032-11464C8
pullover 7s5616-7843C8
skirt 6s1211-11524C8



cardigan 7s5608-7837C8
t-shirt 3s4577-30285C6
trousers 4s2200-11499C6
scarf 8s763-8395AC



blazer 1s1039-11513C7
t-shirt 3s4577-30285C6
trousers 4s2203-11513C7
belt 8s771-8399AC
sneakers 8s755-8389AC



pullover 7s5594-7838C7
trousers 4s2203-11513C7
sneakers 8s755-8389AC



cardigan 7s5602-7841C6
blouse 2s2644-11508C6
trousers 4s2200-11499C6
chelsea boots 8s756-8390AC



cardigan 7s5611-7833C6
skirt 6s1208-11479C6
chelsea boots 8s756-8390AC



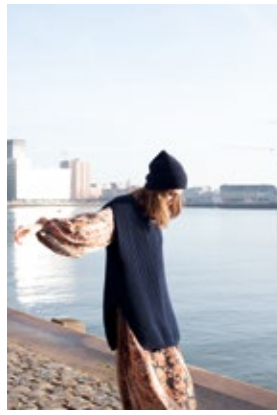
pullover 7s5595-7833C6
skirt 6s1209-11496C6



cardigan 7s5613-7838C6
culotte 4s2170-11498C6
boots 8s757-8391AC



top 2s2621-11472C6
culotte 4s2170-11498C6



spencer 7s5614-7842C8
dress 5s1308-11527C8



jacket 1s1028-11461C6
top 2s2631-11468C8
trousers 4s2175-11468C8



jacket 1s1028-11461C6
top 2s2631-11468C8
trousers 4s2175-11468C8
chelsea boots 8s756-8390AC



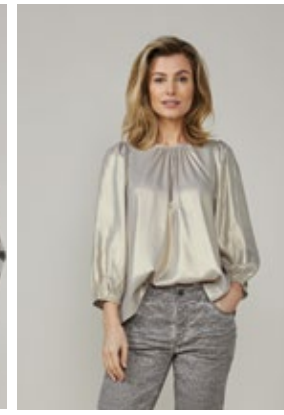
gilet 9s087-11498C6
cardigan 7s5613-7838C6
blouse 2s2628-11476C6
culotte 4s2170-11498C6



leather jacket 1s1030-11467C8
pullover 7s5587-7832C8
trousers 4s2178-11512C8
sneakers 8s755-8389AC



top 3s4560-30266C6
trousers 4s2168-11495C6



top 2s2627-11479C6
trousers 4s2164-11489C6



pullover 7s5595-7833C6
trousers 4s2174-11467C6



cardigan 7s5611-7833C6
top 2s2661-11505C6
trousers 4s2204-11495C6



classic blazer 1s100-90100C6
t-shirt 3s4577-30285C6
classic trousers 4s100-90100C6



dress 5s1295-11471C7
bag 8s761-8393AC



spencer 7s5593-7842C6
blouse 2s130-90220C6
skirt 6s1209-11496C6



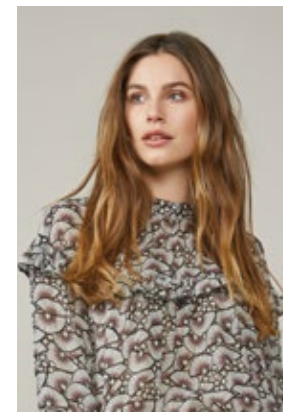
pullover 7s5590-7836C8
skirt 6s1209-11496C6



pullover 7s5507-7830C6
skirt 6s1208-11479C6
chelsea boots 8s756-8390AC
scarf 8s765-8397AC



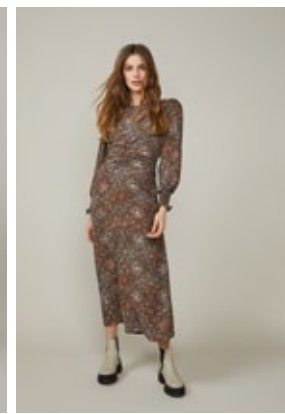
jacket 1s1028-11461C6
blouse 2s2633-11508C7
trousers 4s2202-11498C6
chelsea boots 8s756-8390AC
beanie 8s772-7844AC



blouse 2s2635-11500C6



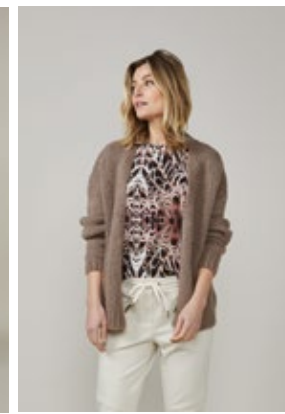
top 7s5598-7830C6
trousers 4s2196-11496C6
sneakers 8s755-8389AC



dress 5s1299-11501C6
chelsea boots 8s756-8390AC



top 2s2616-11509C6
trousers 4s2157-11483C6



cardigan 7s5603-7841C6
top 3s4570-30271C6
trousers 4s2202-11498C6



dress 5s1312-11504C6



cardigan 7s5613-7838C6
trousers 4s2170-11498C6



sweater 3s4556-30278C6
trousers 4s2202-11498C6



pullover 7s5596-7833C6
trousers 4s2196-11496C6
sneakers 8s755-8389AC



blazer 1s1039-11513C7
trousers 4s2203-11513C7
belt 8s770-8398AC
chelsea boots 8s756-8390AC



dress 5s1309-11509C7



gilet 9s087-11498C7
turtleneck 7s5529-7830C7
trousers 4s2203-11513C7



dress 5s1315-11514C7



blouse 2s2619-11527C8
trousers 4s2191-30267C8



gilet 9s087-11498C8
blouse 2s2619-11527C8
culotte 4s2170-11498C8



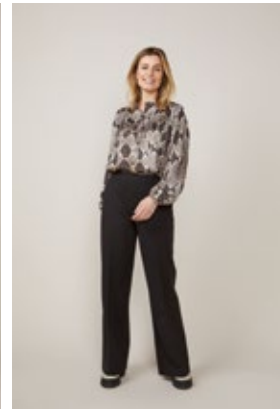
blouse 2s2617-11509C7
jeans 4s2187-5102BD



dress 5s1295-11471C7
chelsea boots 8s756-8390AC



blouse 2s2641-11518C7
skirt 6s1204-11467C7



blouse 2s2655-11515C7
trousers 4s2197-11498C7
chelsea boots 8s756-8390AC



dress 5s1305-11518C7



dress 5s1310-11498C8



blouse 2s2653-11527C8
culotte 4s2170-11498C8



dress 5s1308-11527C8



pullover 7s5590-7836C8



blouse 2s2612-11466C8
trousers 4s2175-11468C8



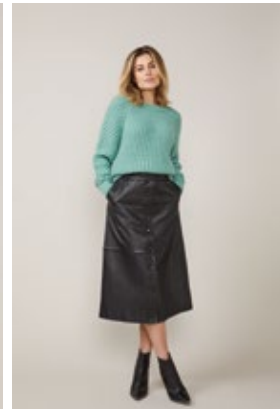
pullover 7s5605-7835C7
trousers 4s2157-11483C7



coat 1s1031-11463C6
blouse 2s2620-11518C7



denim blouse 2s2637-5101BD
trousers 4s2203-11513C7



pullover 7s5605-7835C7
skirt 6s1204-11467C7



coat 1s1031-11463C6
blouse 2s2620-11518C7
jeans 4s2187-5102BD
scarf 8s763-8395AC



pullover 7s5589-7834C8
skirt 6s1209-11496C8
sneakers 8s755-8389AC



top 2s2631-11468C8
trousers 4s2175-11468C8
chelsea boots 8s756-8390AC



pullover 7s5616-7843C8
skirt 6s1211-11524C8



dress 5s1313-11524C8



pullover 7s5616-7843C8
skirt 6s1206-11470C8



top 2s2652-11496C7
trousers 4s2196-11496C6
sneakers 8s755-8389AC



cardigan 7s5606-7843C7



sweater 3s4583-30263C7
trousers 4s2196-11496C6
sneakers 8s755-8389AC



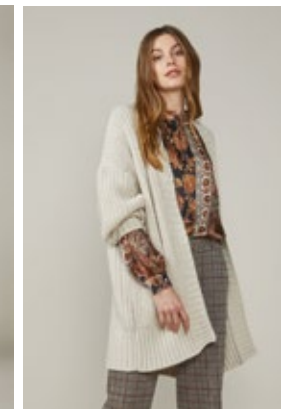
jacket 1s1038-30263C7
trousers 4s2166-11486C7



blouse 2s2647-11514C7
jeans 4s2190-5100BD



spencer 7s5614-7842C8
dress 5s1313-11524C8



cardigan 7s5608-7837C8
blouse 2s2619-11527C8
trousers 4s2191-30267C8



pullover 7s5588-7832C8
trousers 4s2178-11512C8



pullover 7s5589-7834C8
jeans 4s2158-11483BD



blouse 2s2653-11527C8
trousers 4s2178-11512C8



blouse 2s2649-11528C8
culotte 4s2170-11498C8



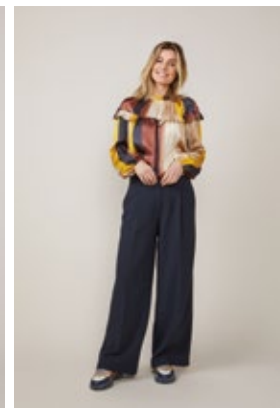
dress 5s1311-11528C8



sweater 3s4583-30263C8
trousers 4s2191-30267C8
bag 8s762-8393AC



cardigan 7s5591-7836C8
trousers 4s2196-11496C8
sneakers 8s755-8389AC



blouse 2s2659-11523C8
trousers 4s2178-11512C8
sneakers 8s755-8389AC



blouse 2s2659-11523C8
trousers 4s2159-11322C8



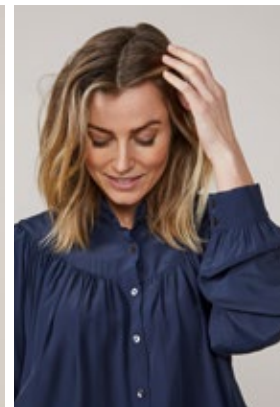
jacket 1s1034-11322C8
trousers 4s2159-11322C8



classic blazer 1s100-90100C8
classic trousers 4s100-90100C8
sneakers 8s755-8389AC



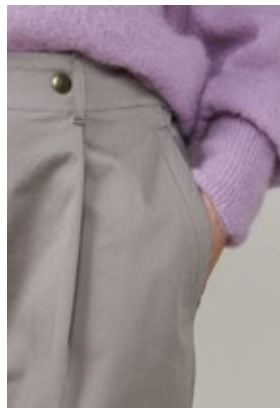
blouse 2s2660-11523C8
trousers 4s2175-11468C8



blouse 2s2644-11508C8



top 3s4560-30266C6
trousers 4s2168-11495C6



pullover 7s5595-7833C6
trousers 4s2168-11495C6



sweater 3s4583-30263C7
skirt 6s1209-11496C7
sneakers 8s755-8389AC
scarf 8s765-8397AC



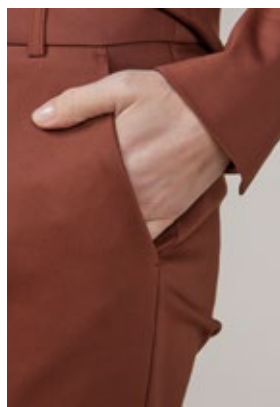
top 3s4585-30277C8
skirt 6s1211-11524C8



cardigan 7s5597-7837C7
jeans 4s2153-5081BD



blouse 2s2642-11517C7
trousers 4s2156-11430C7



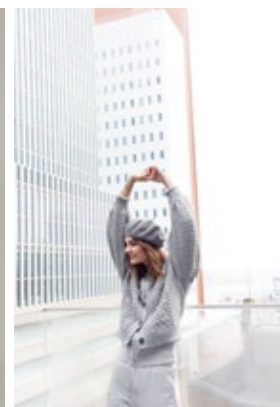
classic trousers 4s100-90100C6



gilet 9s086-11512C8
blouse 2s2612-11466C8
trousers 4s2178-11512C8



pullover 7s5596-7833C6
trousers 4s2205-11478C8
chelsea boots 8s756-8390AC



backcover:
cardigan 7s5606-7843C7
cardigan 1s1038-30263C7
trousers 4s2196-11496C7



pullover 7s5596-7833C6
trousers 4s2205-11478C8, **chelsea boots** 8s756-8390AC

CONTACT US

BELGIUM

Eefje Gilis
+32 (0)475741959

DENMARK

Hanne Schultz
+45 (0)20355718

FINLAND

Taina Myllylä
+35 (0)8405586584

FRANCE

General Agent
Frank Mattouk
+33 (0)688364876

Paris + North

Monique La Croix
+33 (0)613089190

GERMANY

Berlin
Brita Daberkow
+49 (0)3074004581

Hamburg

Ingo Palm
+49 (0)15124021580

Munich

Sabine Pfisterer
+49 (0)1728504491

Nordrhein-Westfalen

Regine Schwarz
+49 (0)21317181485

Eschborn

Claudia Walenta
+49 (0)1717560210

Sindelfingen

Susanne Sanz
+49 (0)1722566365

GREAT BRITAIN

Jo Briggs
+44 (0)7496774792

IRELAND

Michael Griffith
+44 (0)7976804101

NORWAY

Harald Dahlstrøm
+47 (0)97153888

RUSSIA

Valery Schütz
+49 (0)23072699808

SPAIN

Bilbao
Rodolfo Echevarria
+34 (0)607898363

San Sebastián

Cristina Hernandez
Juantergui
+34 (0)670497445

SWEDEN

Ebba Härleman
+46 (0)709261522

SWITZERLAND

Mark Struck
+41 (0)763809940

U.S.A

Tanya Gabrielyan
+1 (646)8281234

SUMMUM WOMAN HEADQUARTERS

+31 (0)202622800
sales@summumwoman.com
summumwoman.com



article numbers p.74

summumwoman.com